



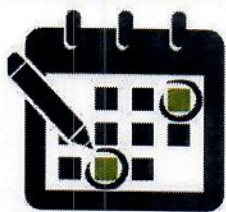
## SPEED DATA ANALYSIS

### Location

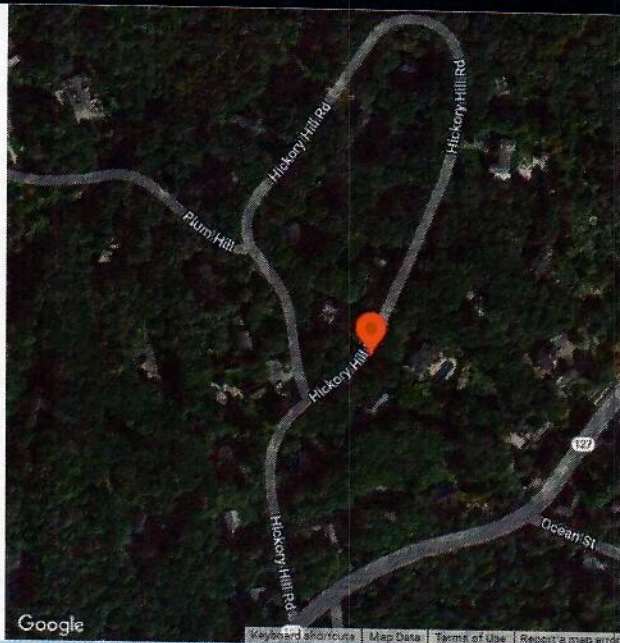


9 Hickory Hill on Pole #5  
Summer Street  
Latitude: 42.580125  
Longitude: -70.744052

### Analysis Time Period



Start	End
8/17/2023	8/24/2023
2:19 PM	2:44 PM



### Vehicles Analyzed



963

### Speed Limit



25

### Total Enforceable Violations



0

### Average Speed



17

### % Enforceable Violations



0%

### Fastest Speed



28

### Enforcement Rating

LOW

### Slowest Speed



7



## Speed Enforcement Evaluator

### Location

9 Hickory Hill on Pole #5

### Closest Cross Street

Summer Street

### Analysis Dates

Start: 8/17/2023

End: 8/24/2023

### Equipment Used

JAMAR Law Enforcement Data Radar

### Installed By

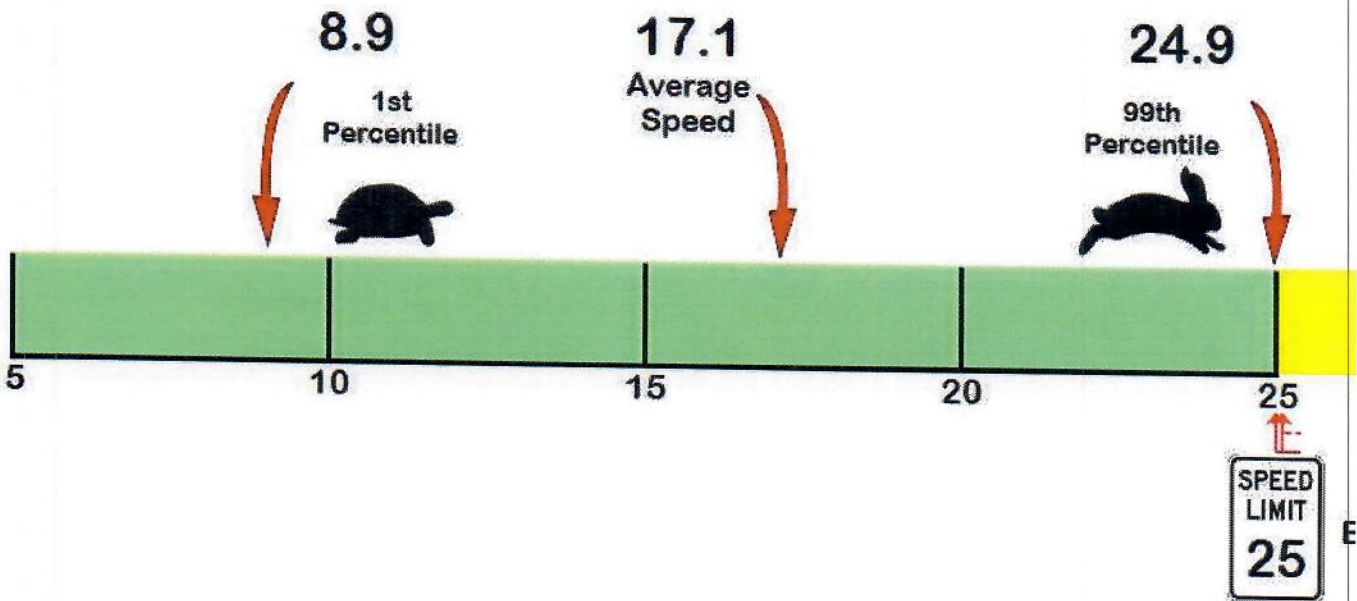
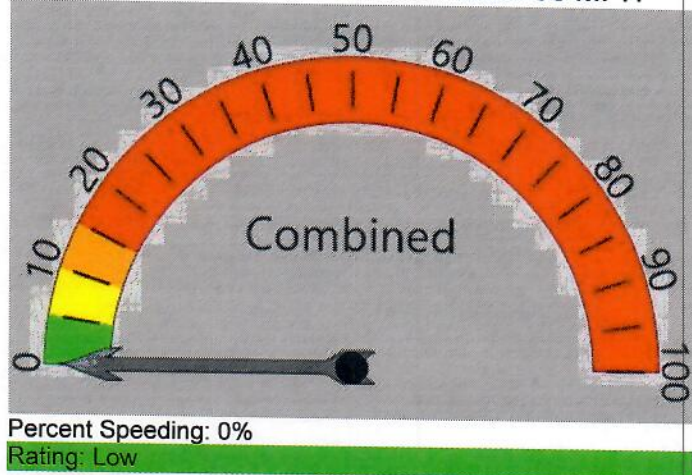
Lt. Mark McCoy

### Requested By

Chief Todd Fitzgerald

### Total Percentage of Enforceable Violations

Posted Speed Limit 25 MPH  
Enforcement Tolerance 5 MPH  
Enforcement Limit Greater than 30 MPH



**Manchester-by-the-Sea Police Department**  
**10 Central Street**  
**Manchester-by-the-Sea, MA 01944**



**Vehicle Totals - Combined**

<= 3	<= 6	<= 9	<= 12	<= 15	<= 18	<= 21	<= 24	<= 27	<= 30	<= 33	<= 36	<= 39	> 39
0	0	12	106	230	258	232	100	23	2	0	0	0	0
85th Percentile: 20.9													

**Vehicle Totals - North, 1**

<= 3	<= 6	<= 9	<= 12	<= 15	<= 18	<= 21	<= 24	<= 27	<= 30	<= 33	<= 36	<= 39	> 39
0	0	8	30	109	125	109	47	5	0	0	0	0	0
85th Percentile: 20.9													

**Vehicle Totals - South, 2**

<= 3	<= 6	<= 9	<= 12	<= 15	<= 18	<= 21	<= 24	<= 27	<= 30	<= 33	<= 36	<= 39	> 39
0	0	4	76	121	133	123	53	18	2	0	0	0	0
85th Percentile: 20.9													