



SPEED DATA ANALYSIS

Location



11 Tuck's Point Rd @ Light
Post #3
Latitude: 42.566725
Longitude: -70.780445



Analysis Time Period



Start	End
8/23/2022 1:17 PM	8/31/2022 11:56 AM

Vehicles Analyzed



4,705

Speed Limit



20

Total Enforceable Violations



7

Enforcement Tolerance



10

% Enforceable Violations



0%

Average Speed



19

Enforcement Rating

LOW

85th Percentile Speed



22



Speed Enforcement Evaluator

Location

11 Tuck's Point Rd @ Light Post #3

Total Percentage of Enforceable Violations

Analysis Dates

Start: 8/23/2022
End: 8/31/2022

Posted Speed Limit 20 MPH
Enforcement Tolerance 10 MPH
Enforcement Limit Greater than 30 MPH

Equipment Used

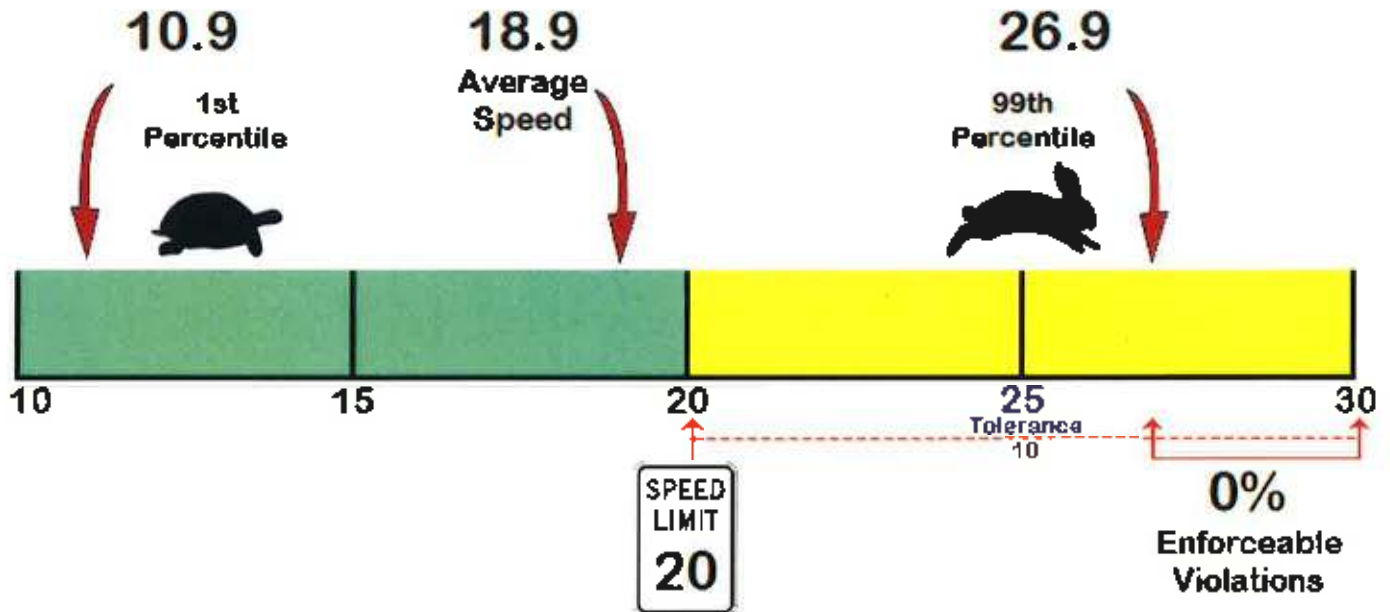
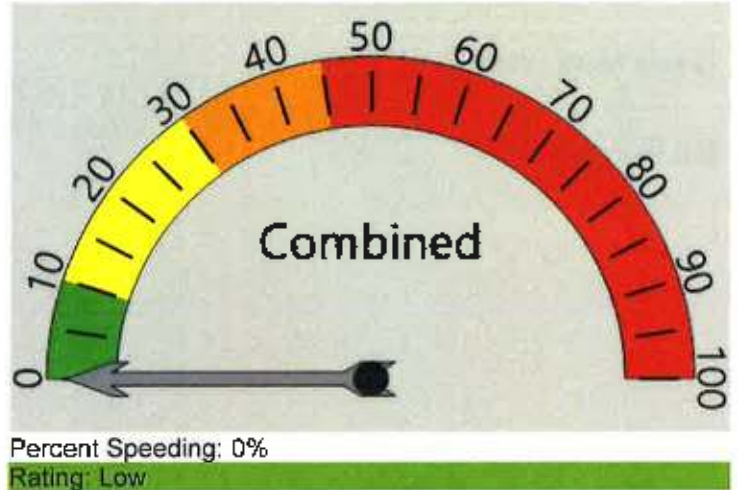
JAMAR Law Enforcement Speed Data Radar

Installed By

Lt. Mark McCoy

Requested By

Chief Todd Fitzgerald



Manchester-by-the-Sea Police Department
 10 Central Street
 Manchester-by-the-Sea, MA 01944



Vehicle Totals - Combined

<= 3	<= 6	<= 9	<= 12	<= 15	<= 18	<= 21	<= 24	<= 27	<= 30	<= 33	<= 36	<= 39	> 39
0	0	10	120	554	1430	1584	798	180	24	7	0	0	0
85th Percentile: 21.9													

Vehicle Totals - East, 1

<= 3	<= 6	<= 9	<= 12	<= 15	<= 18	<= 21	<= 24	<= 27	<= 30	<= 33	<= 36	<= 39	> 39
0	0	4	31	182	565	726	385	105	9	2	0	0	0
85th Percentile: 22.9													

Vehicle Totals - West, 2

<= 3	<= 6	<= 9	<= 12	<= 15	<= 18	<= 21	<= 24	<= 27	<= 30	<= 33	<= 36	<= 39	> 39
0	0	6	89	372	865	858	413	75	15	5	0	0	0
85th Percentile: 21.9													

Manchester-by-the-Sea Police Department
10 Central Street
Manchester-by-the-Sea, MA 01944

