



SPEED DATA ANALYSIS

Location



Latitude: 42.579687
Longitude: -70.744872



Analysis Time Period



Start	End
3/24/2021 3:50 PM	3/31/2021 3:50 PM

Vehicles Analyzed



2,175

Speed Limit



25

Total Enforceable Violations



1

Enforcement Tolerance



10

% Enforceable Violations



0%

Average Speed



23

Enforcement Rating

LOW

85th Percentile Speed



27



Speed Enforcement Evaluator

Location

Pole3, Hickory Hill Rd March 24 to March 31

GPS

Latitude: 42.579687
Longitude: -70.744872

Analysis Dates

Start: 3/24/2021
End: 3/31/2021

Equipment Used

JAMAR Law Enforcement Data Radar

Installed By

Lt. Mark McCoy

Requested By

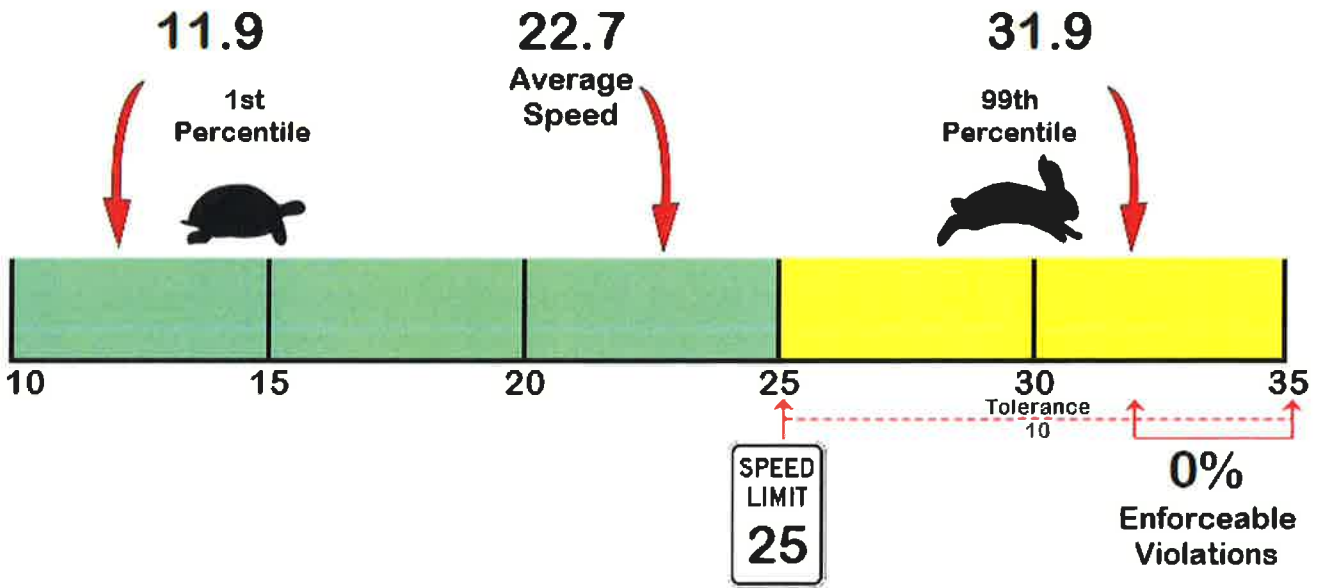
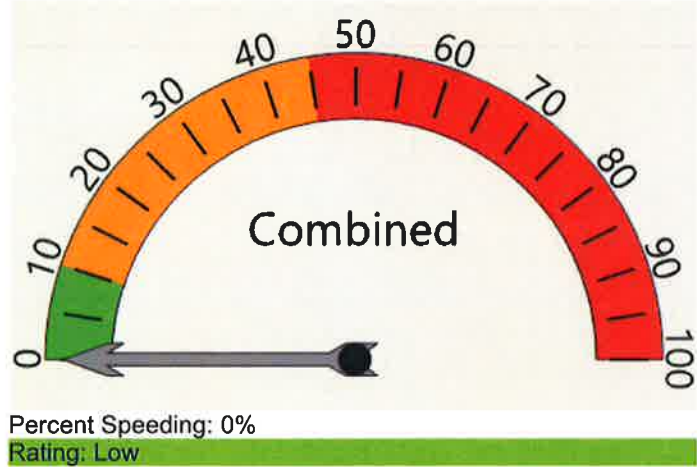
Chief Todd Fitzgerald

ADT

318

Total Percentage of Enforceable Violations

Posted Speed Limit 25 MPH
Enforcement Tolerance 10 MPH
Enforcement Limit Greater than 35 MPH



Manchester-by-the-Sea Police Department
10 Central Street
Manchester-by-the-Sea, MA 01944



Vehicle Totals - Combined

<= 3	<= 6	<= 9	<= 12	<= 15	<= 18	<= 21	<= 24	<= 27	<= 30	<= 33	<= 36	<= 39	> 39
0	0	0	17	40	157	434	681	612	279	69	9	1	1

85th Percentile: 26.9

Vehicle Totals - North, 1

<= 3	<= 6	<= 9	<= 12	<= 15	<= 18	<= 21	<= 24	<= 27	<= 30	<= 33	<= 36	<= 39	> 39
0	0	0	13	34	108	292	399	254	56	6	2	0	0

85th Percentile: 24.9

Vehicle Totals - South, 2

<= 3	<= 6	<= 9	<= 12	<= 15	<= 18	<= 21	<= 24	<= 27	<= 30	<= 33	<= 36	<= 39	> 39
0	0	0	4	6	49	142	282	358	223	63	7	1	1

85th Percentile: 27.9

Manchester-by-the-Sea Police Department
10 Central Street
Manchester-by-the-Sea, MA 01944

