



SPEED DATA ANALYSIS

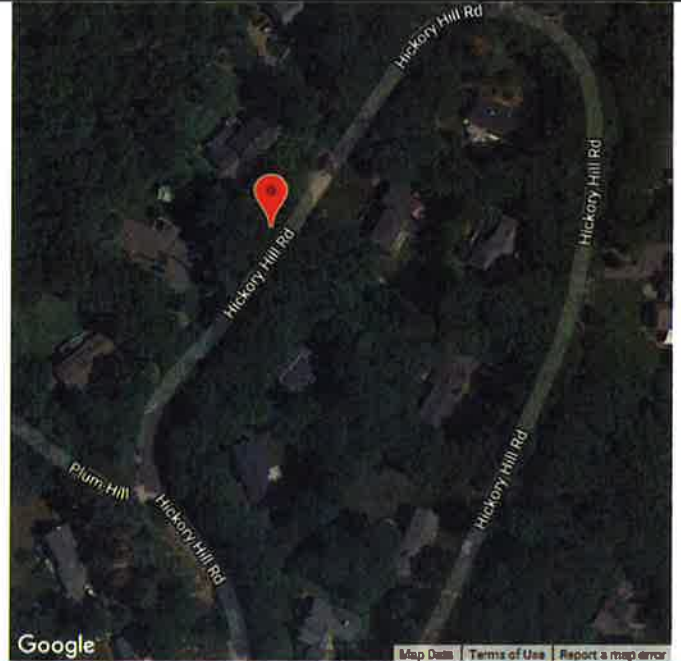
Location



#25 Hickory Hill Rd on Pole #13

Latitude: 42.581656

Longitude: -70.744649



Analysis Time Period



Start
3/10/2021
3:24 PM

End
3/17/2021
3:24 PM

Vehicles Analyzed



290

Speed Limit



25

Total Enforceable Violations



2

Enforcement Tolerance



10

% Enforceable Violations



1%

Average Speed



19

Enforcement Rating

LOW

85th Percentile Speed



25



Speed Enforcement Evaluator

Location

#25 Hickory Hill Rd on Pole #13

GPS

Latitude: 42.581656
Longitude: -70.744649

Analysis Dates

Start: 3/10/2021
End: 3/17/2021

Equipment Used

JAMAR Radar Data Speed Unit

Installed By

Lt. McCoy

Requested By

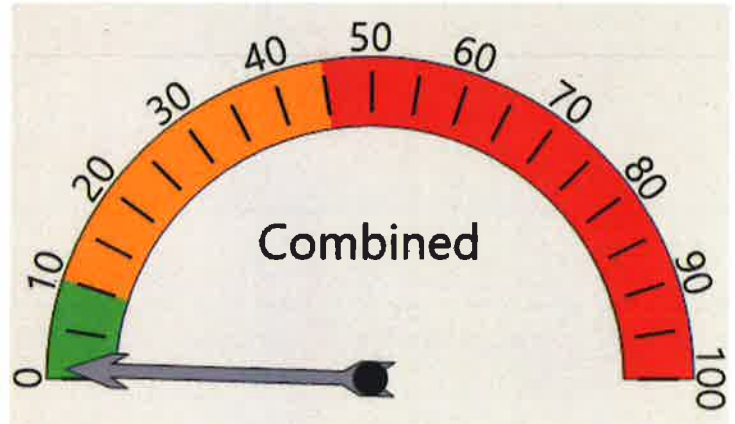
Chief Todd Fitzgerald

ADT

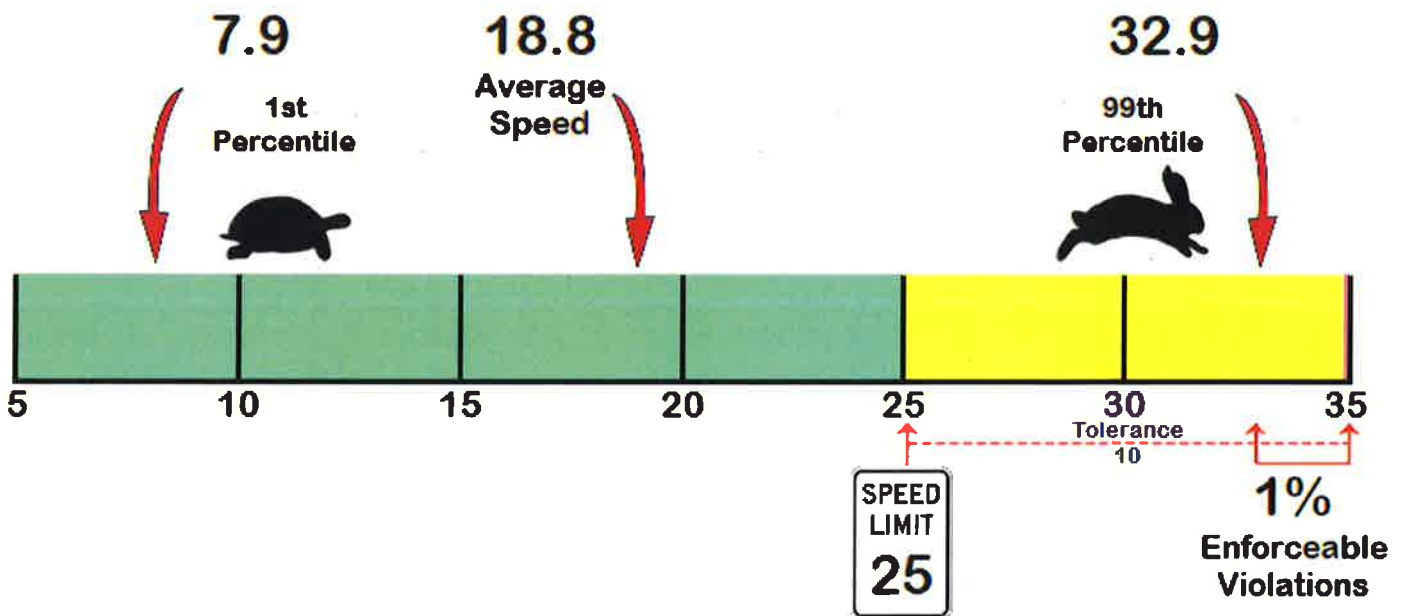
41

Total Percentage of Enforceable Violations

Posted Speed Limit 25 MPH
Enforcement Tolerance 10 MPH
Enforcement Limit Greater than 35 MPH



Percent Speeding: 1%
Rating: Low



Manchester-by-the-Sea Police Department
10 Central Street
Manchester-by-the-Sea, MA 01944



Vehicle Totals - Combined

<= 35	<= 40	<= 45	<= 50	<= 55	<= 60	<= 65	<= 70	<= 75	<= 80	<= 85	<= 90	> 90
301	2	0	0	0	0	0	0	0	0	0	0	0
85th Percentile: 24.9												

Vehicle Totals - West, 1

<= 35	<= 40	<= 45	<= 50	<= 55	<= 60	<= 65	<= 70	<= 75	<= 80	<= 85	<= 90	> 90
187	1	0	0	0	0	0	0	0	0	0	0	0
85th Percentile: 24.9												

Vehicle Totals - East, 2

<= 35	<= 40	<= 45	<= 50	<= 55	<= 60	<= 65	<= 70	<= 75	<= 80	<= 85	<= 90	> 90
114	1	0	0	0	0	0	0	0	0	0	0	0
85th Percentile: 23.9												

Manchester-by-the-Sea Police Department
10 Central Street
Manchester-by-the-Sea, MA 01944

